

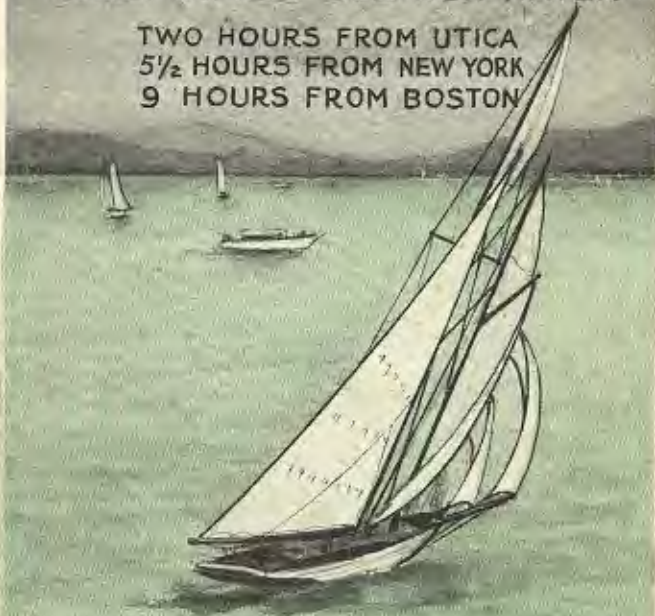
OTSEGO & HERKIMER

THE CANADARAGO & OTSEGO LAKE COUNTRY

RICHFIELD SPRINGS

WORLD FAMED SULPHUR WATER

TWO HOURS FROM UTICA
5½ HOURS FROM NEW YORK
9 HOURS FROM BOSTON



CANADARAGO LAKE

OTSEGO & HERKIMER

THE CANADARAGO & OTSEGO LAKE COUNTRY

COOPERSTOWN

SCENES OF THE
LEATHER STOCKING TALES

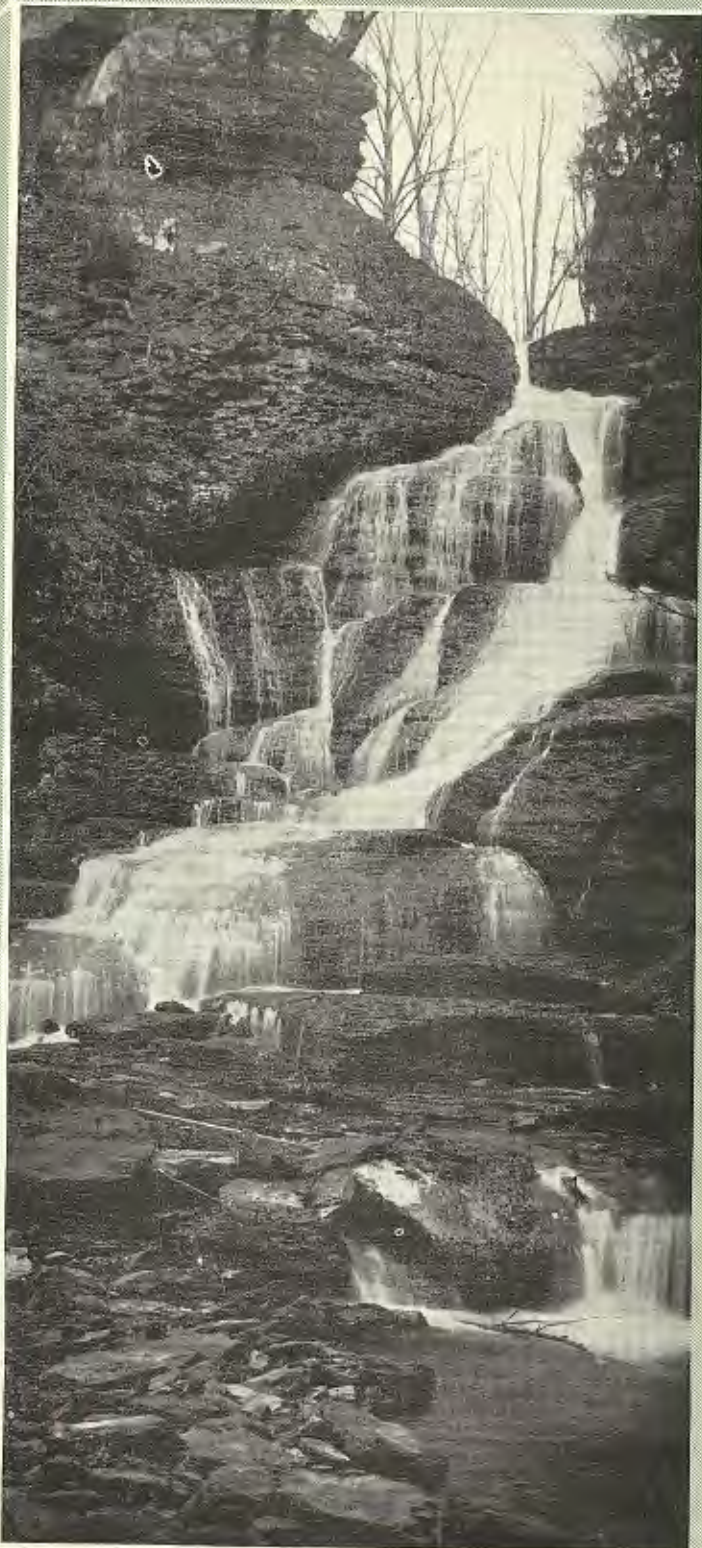
THREE HOURS FROM UTICA
6½ HOURS FROM NEW YORK
10 HOURS FROM BOSTON



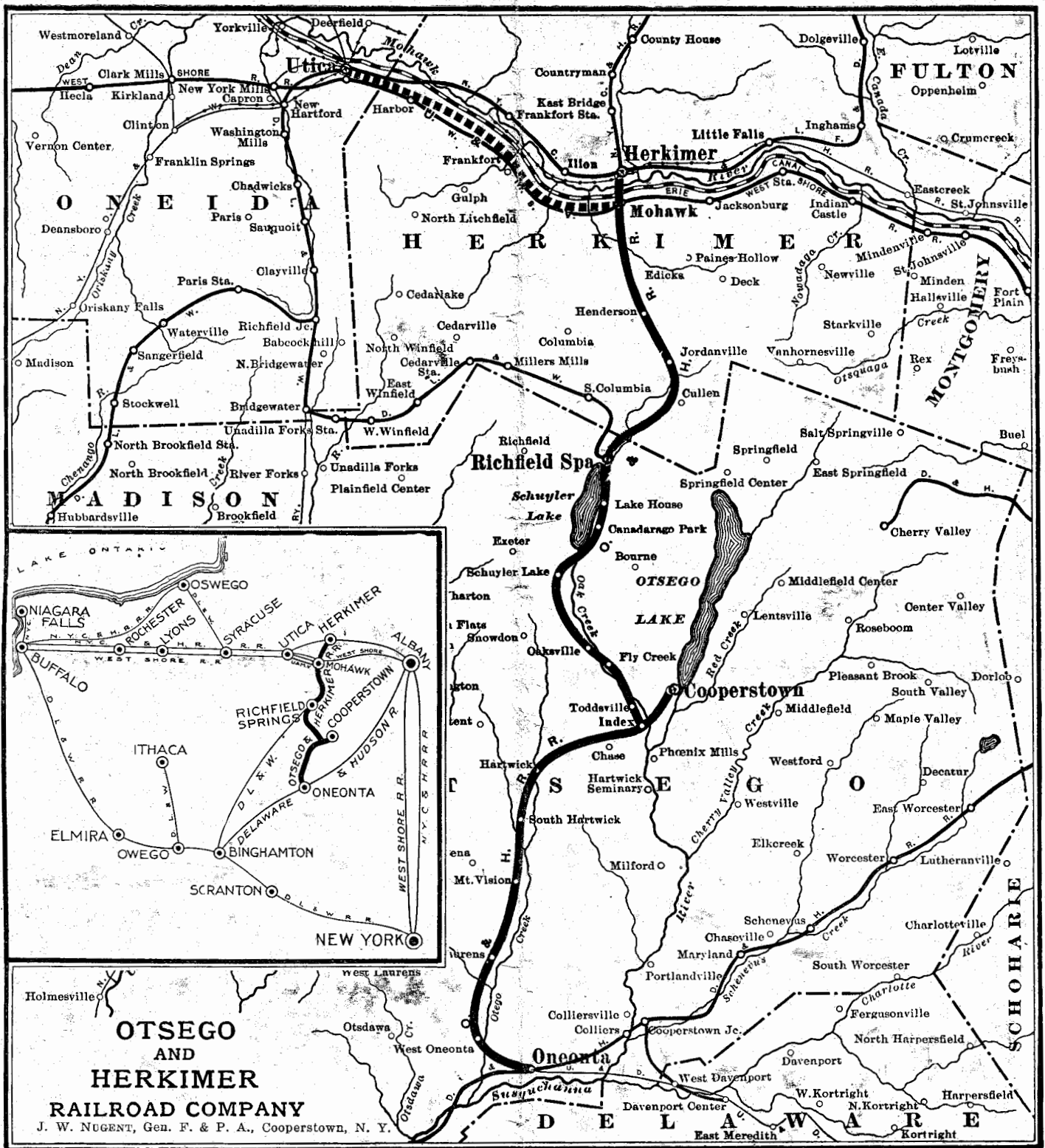
OTSEGO LAKE



COOPER'S LEATHERSTOCKING



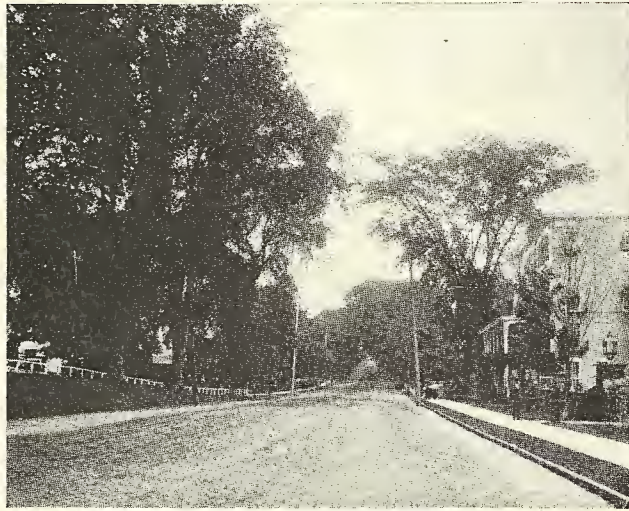
LEATHERSTOCKING FALLS



THE ARTHUR H. CRIST CO., Cooperstown, N. Y.



BATH HOUSE, RICHFIELD SPRINGS



THE TULLER, RICHFIELD SPRINGS



GREAT WHITE SULPHUR SPRINGS, RICHFIELD



LIBRARY AT JORDANVILLE



HERKIMER BUSINESS MEN ON OTSEGO LAKE



CLUB AND LIBRARY, COOPERSTOWN



COTTAGE ON CANADARAGO LAKE



THE EARLINGTON, RICHFIELD SPRINGS



PRIVATE PARK, FLYCREEK



HARTWICK VILLAGE



MOHICAN GLEN



A GOOD BREEZE ON OTSEGO LAKE



APPROACH TO THE SULPHUR SPRING, RICHFIELD.



A LITTLE NIAGARA



MONUMENT PARK, RICHFIELD



SITE OF COOPER'S HOME



VIEW FROM O-TE-SA-GA



AS GOOD AS THE BEST

SPEEDING ON THE GLIMMERGLASS



THE REMINGTON BAND AT FIVE-MILE POINT INN

OFF FOR A CATCH OF PICKEREL ON CANADARAGO LAKE

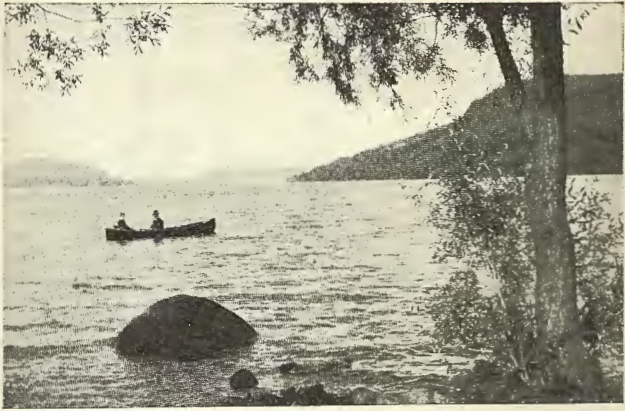


CAMP COLONY ON CANADARAGO LAKE

400-HORSE POWER FREIGHT LOCOMOTIVE



FOR SALE--Main Building 100 ft. x 220 ft. Power--150 h. p. water and 100 h. p. steam. 25,000 sq. ft. floor space



COUNCIL ROCK, OTSEGO LAKE



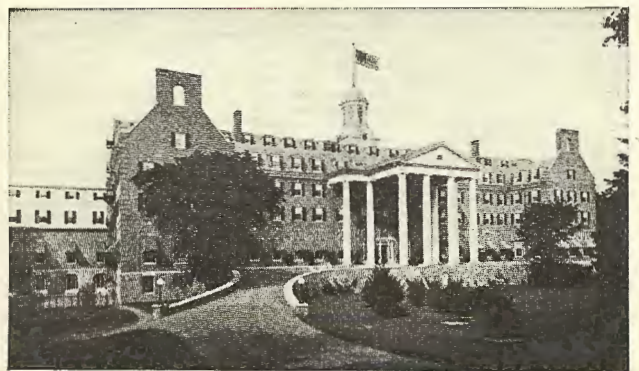
THE ISLAND, CANADARAGO LAKE



SPRING PARK, RICHFIELD SPRINGS



SLEEPING LION, OTSEGO LAKE



THE O-TE-SA-GA, COOPERSTOWN



CROSSING, OAK CREEK



MORE SPECKLED BEAUTIES



THE EARLINGTON, RICHFIELD SPRINGS



HARTWICK VILLAGE



A GOOD BREEZE ON OTSEGO LAKE



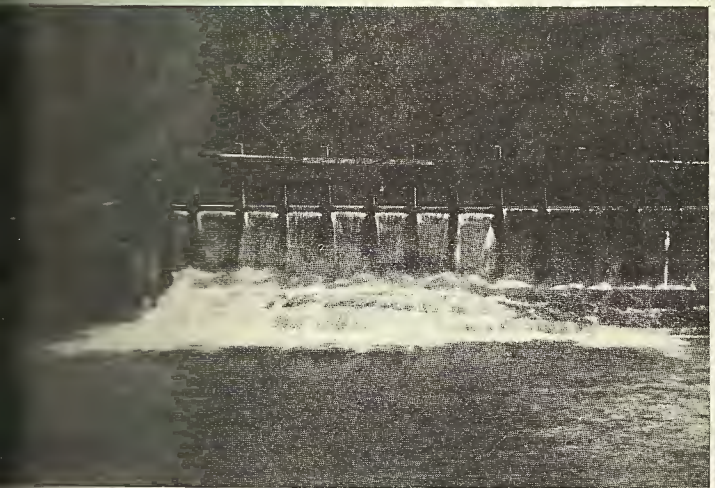
BATH HOUSE, RICHFIELD SPRINGS



THE TULLER, RICHFIELD SPRINGS



GREAT WHITE SULPHUR SPRINGS, RICHFIELD



WHERE THE SPECKLED BEAUTIES LIE



HENDERSON HOUSE



PASSING MOHAWK HIGH SCHOOL



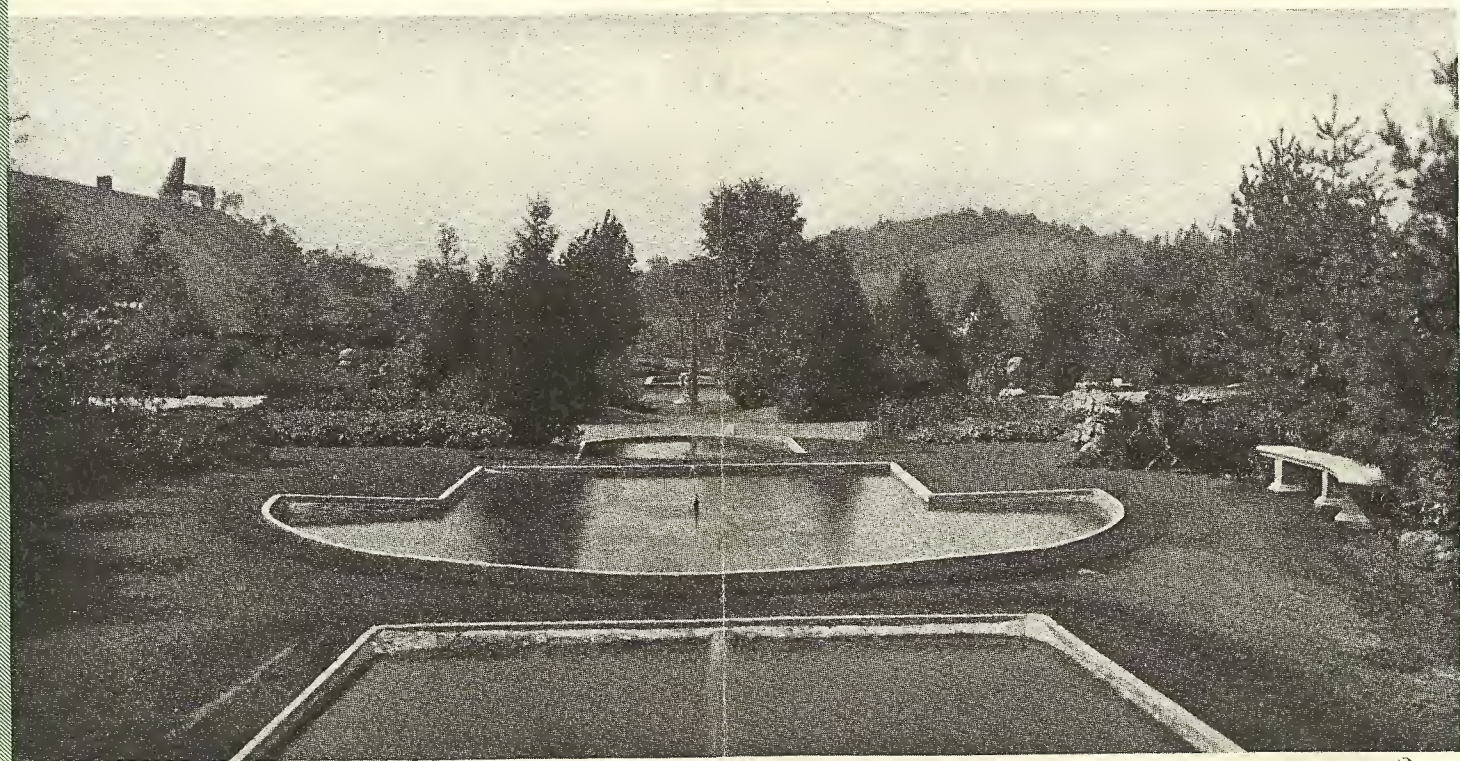
INTERIOR LIBRARY AT JORDANVILLE



TRY A "CAST" IN HERE



KINGFISHER TOWER, OTSEGO LAKE



GARDEN OF THE MILLS, RICHFIELD SPRINGS